

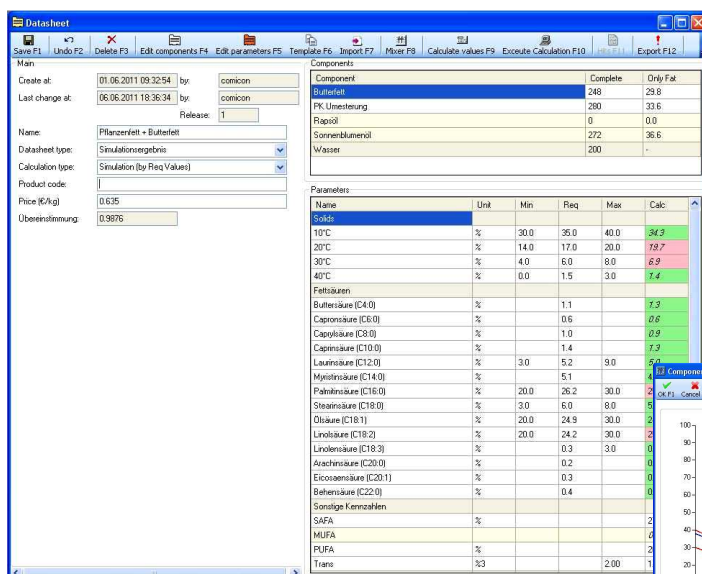
Easy, Quick and Cost-Efficient Product Development

Oil-Expert.net is a further development of OilExpert. It covers and supports the whole product development cycle, especially the development of recipes for fat refineries, margarine factories and the confectionery & chocolate industry. In particular in working with edible fats and oils, it is possible to move a large part of laboratory work to the computer by calculation, simulation and optimization recipes and parameters.

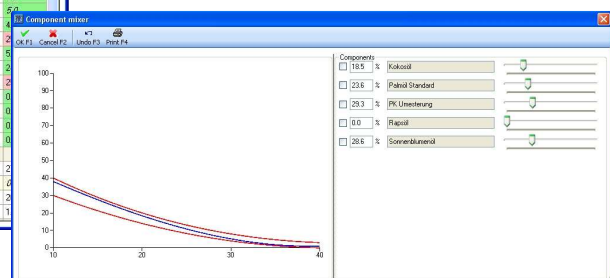
Benefits:

- Simplification and cost control in product development
- Complete workflow from the first idea to the first delivery
- Powerful search engine
- Audit Trail
- All important data are stored in a server database and is available at any time
- Integrated recipe management with multi-level assemblies
- Integrated specification management incl. production instructions
- Reduction of costs and time regarding laboratory tests and analyses
- Cost optimization – getting the recipe with the lowest price
- Rapid response to customer requests and internal product requirements
- Rapid response to questions on possible recipes

Oil-Expert.net is based on modern algorithms and is easy and intuitive to use.

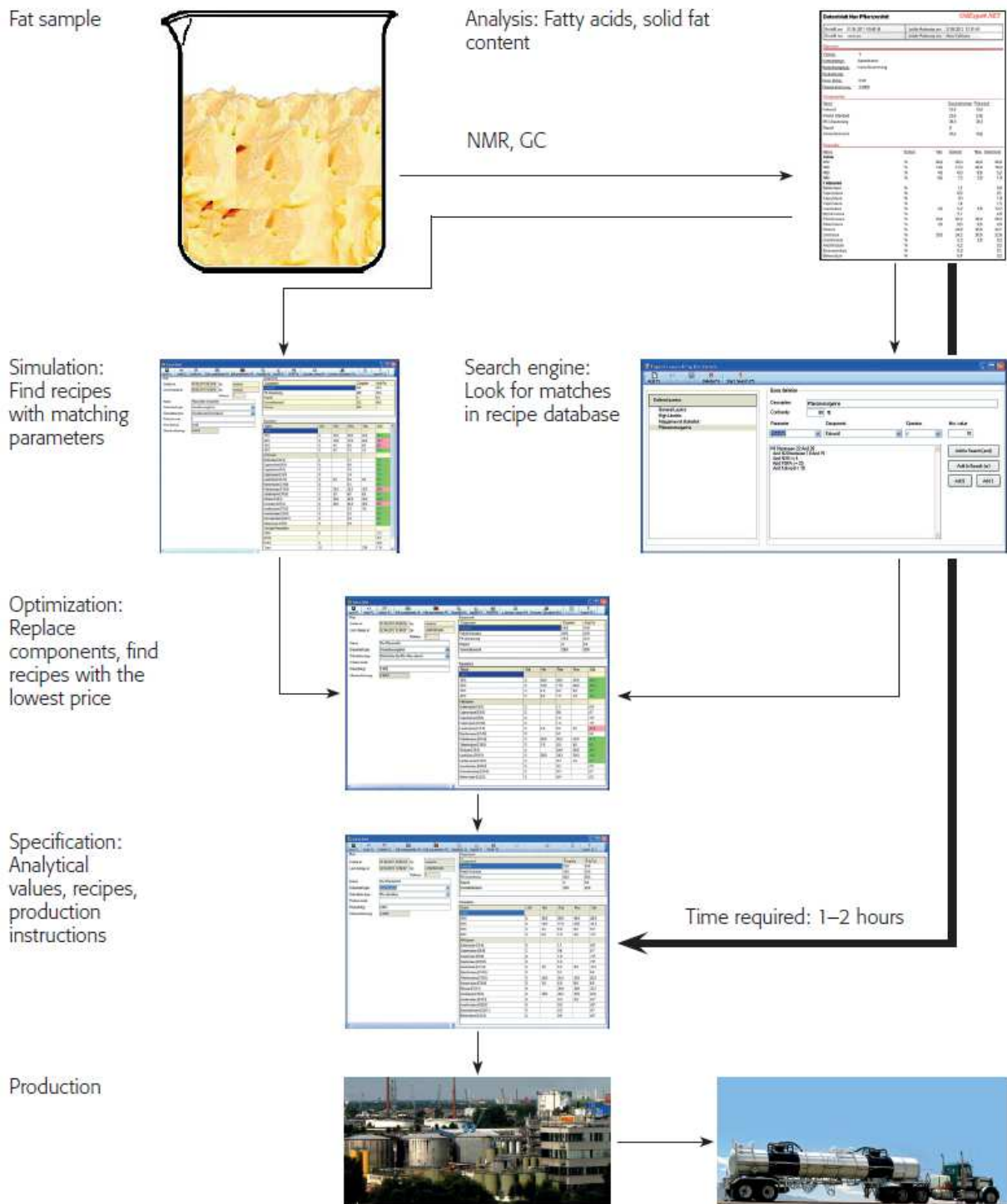


Screenshot **Oil-Expert.net**:
Simulation



Screenshot **Oil-Expert.net**:
Component Mixer

Case Study: From Fat Sample to Production



European Federation for the Science and Technology of Lipids e.V. | Varrentrappstrasse 40-42 | 60486 Frankfurt am Main/Germany | Phone +49(0)69 7917 345 | Fax +49(0)69 7917 564 | info@eurofedlipid.org | www.eurofedlipid.org

LAIX Technologies UG | Am Fasanengang 5 | 52379 Langerwehe/Germany
Phone +49(0)2409 48798 07 | Fax +49(0)2409 48798 08 | info@laix-tech.de | www.laix-tech.de/oil-expert.php

Dr. Cullmann Consulting | Haakestrasse 50 | 21075 Hamburg/Germany
Phone +49(0)40 703 8569 12 | Fax +49(0)40 703 8569 19 | info@oil-expert.net | www.oil-expert.net

Subject to changes in design and scope of delivery as well as further technical development! © Dr. Cullmann Consulting